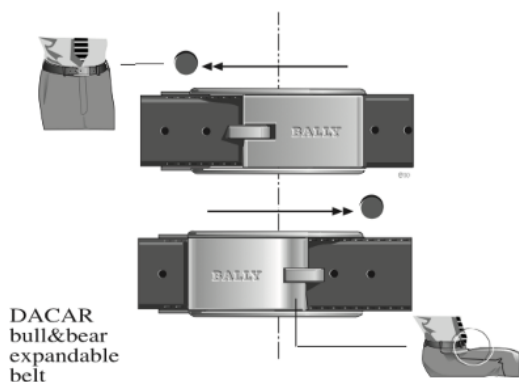
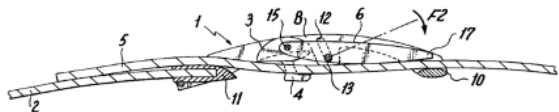


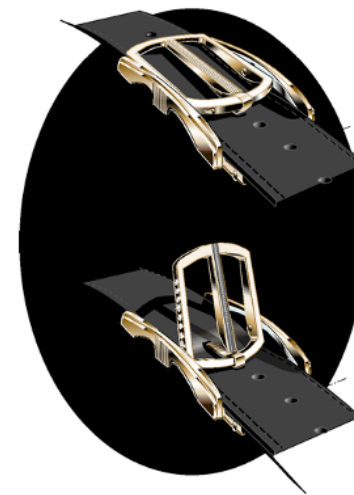
## THE ROLAND ITEN R8 MECHANICAL BELT BUCKLE SERIES



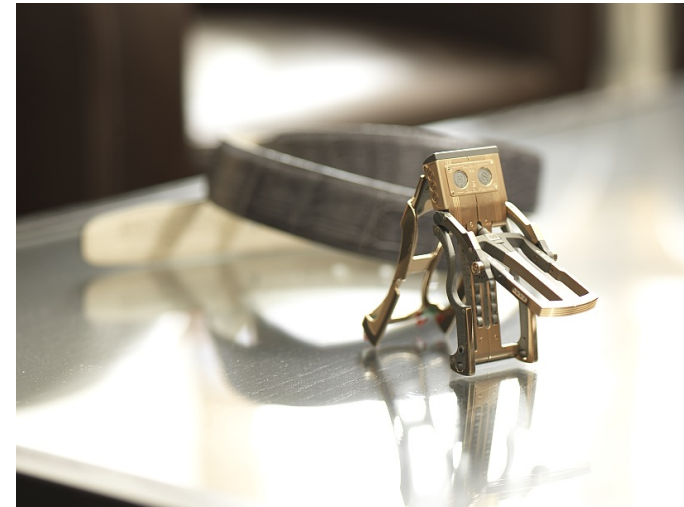
## TIME TO WAIST



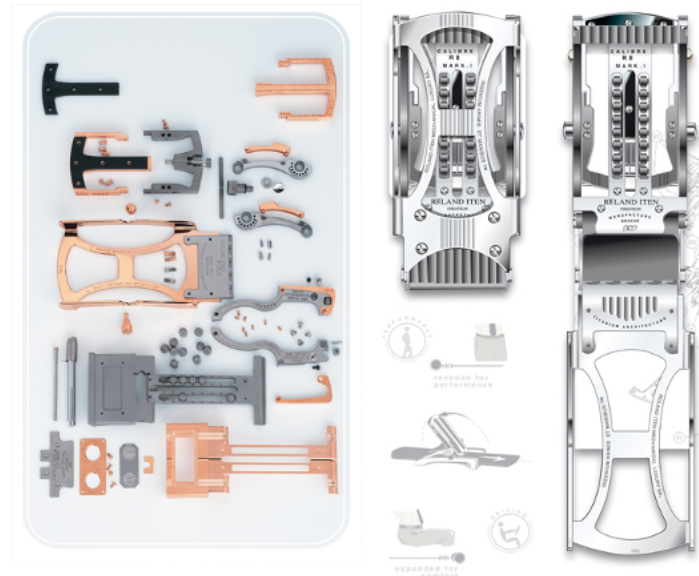
Roland Iten conceived the idea of a mechanical belt buckle long before debuting his first collection at Baselworld in 2004. In the late 90s, he invented and patented a simple lever expansion buckle, which he licensed to the esteemed Swiss luxury brand BALLY. This initial version, crafted in cast steel, garnered awards and achieved widespread sales, including thousands sold in flight on Swissair and in airport duty-free shops worldwide. However, it wasn't until Roland began designing watches for BALLY and BUCHERER in the early 2000s that he encountered watchmaking machinery, igniting his passion for precision engineering. Recognizing a gap in the men's jewelry market, Roland launched his own brand in 2003. Initially aiming to replicate the five-component lever expansion concept in solid gold, utilizing innovative CNC engineering and manufacturing techniques, he soon realized the extensive capabilities of CNC machining for precision production. Evolved from a five-component model to a solid gold masterpiece with titanium architecture, Roland's creation boasts 105 movable mechanical components. These components fulfill functions that elegantly solve problems many gentlemen are unaware they even have, establishing Roland Iten as a pioneer in haute horlogerie-inspired accessories.



## THE WORLD'S FIRST MECHANICAL BELT BUCKLE 2004



The Calibre R8 MK I marked an extraordinary evolution from the simple five-component expandable mechanism patent. Debuting at Baselworld in 2004, this solid gold and titanium belt buckle, engineered with 105 custom-made, movable mechanical parts and a five-axle construction, provided wearers with an extra 30mm of girth with a single-handed flip of a lever. It revolutionized collectors' perceptions of the common belt buckle and opened the eyes of the entire watch industry to the untapped potential of high-precision machines, previously utilized solely for watch case and component production. From that moment on, Roland Iten earned the title of pioneer of mechanical luxury, establishing a new segment in the high-end accessories market where he remains the sole serious contender. Proudly, Roland Iten's clientele includes Jackie Chan, Roger Federer, Valery Gregiev, Ion Tiriac, Sylvester Stallone, and other prominent figures from various fields.





## R8 MARK I UNIQUE EDITION ROGER FEDERER

ISSUE DATE: 2007



Roger Federer is to date, the only Sportsman in history to have won the prestigious Laureus Award four times consecutively and therefore, it was an honour for Roland Iten when Johan Rupert, owner of The Richemont Group, chose to commemorate this unique event with an equally unique gift to Roger of a Roland Iten R8 Mark I Mechanically Performing belt buckle in solid white gold and engraved with his name and Laureus emblem.

Housed in a specially made wooden case reminiscent of a tennis racket and in the colours of the Laureus , it is not certain that Roger has ever actually worn the piece as belt buckle. We believe he prefers to keep it among his most prized possessions in his trophy room making this piece one of the world's most valuable "Roland iten" collectibles.

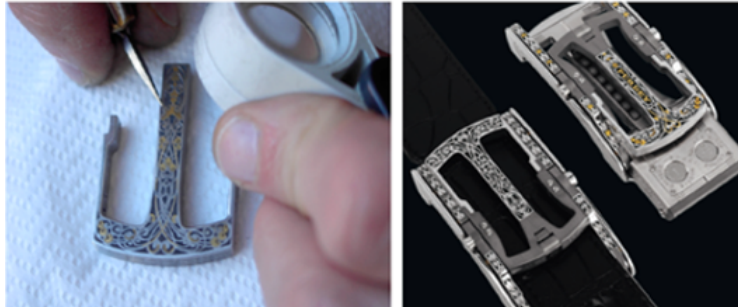


## R8 MARK I SPORT BESPOKE COLLABORATIONS

ISSUE DATE: 2007/2008



ROLAND ITEN  
FOR  
PURDEY



London men's luxury goods firm **Alfred Dunhill Ltd** has launched the ultimate alligator belt for Gentlemen, featuring a high-tech gold, steel and diamond buckle. The Mechanical Belt, created by **Swiss Designer Roland Iten** is produced in a limited edition of 25 pieces globally and is designed for ultra-precise adjustments of exactly 35mm - the "two thumb" measurement a tailor will traditionally build into a custom made suit for added comfort. The five-axel buckle contains a patented system of over 108 movable, mechanical parts including roller bearings, plates and levers.

The mechanics make perfect one-handed adjustments a cinch, so to speak, for instance while maneuvering into and out of a low-seated vintage British sports car. Hand finished by expert artisans in Geneva Switzerland, it is comprised of stainless steel and 18 carat rose gold components ornamented with two inset diamonds. A choice of two alligator skin straps are supplied as well. The belt will be available in Dunhill's flagship stores located in London, New York, Shanghai and Tokyo, with only a handful of pieces to be sold at each one.

## R8 MARK II THE GENTLEMAN SERIES

ISSUE DATE: 2009



The R8 Mark I patent was updated with a double ardillon in 2008. The assumption that the R8 Mark II double (over-under) in-line ardillon grips the leather strap more securely, distributing weight evenly between two holes and decreasing the potential for strap deformation, was confirmed during an 18-month "test drive" by action hero Sylvester Stallone. He put Piece 0 through its paces on the set of "The Expendables II" filming. The buckle collection series launched soon after in 2009, with Sly returning Piece 0 to our museum and receiving serial number 1 of the collection series.





R8 MARK II UNIQUE EDITION SYLVESTER STALLONE  
ISSUE DATE: 2009

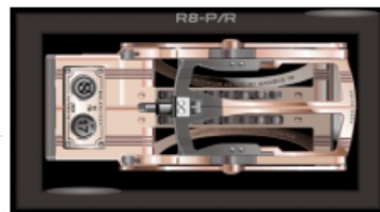
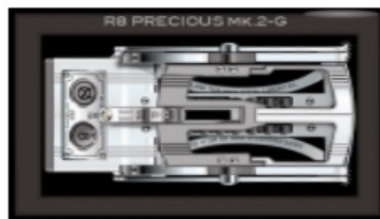
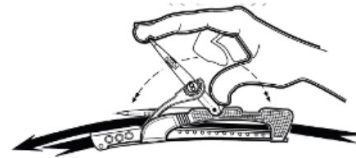




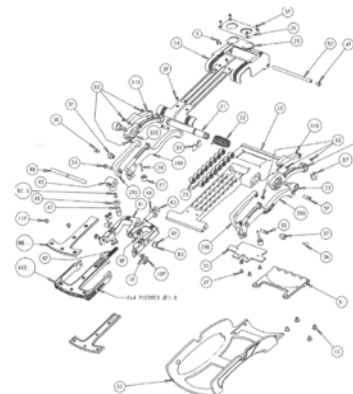
## R8 MARK II THE GENTLEMAN ISSUE DATE: 2009



The R8 MKII Gentleman mechanical belt buckle is the evolved form of Roland Iten's original HE 8 / R8 MK I series, perfect for discreetly expressing refined taste and status. With a sleeker body design, it represents an elegant evolution of the MK I Precious buckle. Its unique feature is the solid gold and titanium double ardlion tang, enhancing grip and ensuring durability. Hand-finished with discreetly set diamonds, each buckle showcases meticulous craftsmanship akin to Swiss watchmaking.



### COLLECTORS INFORMATION



#### Case:

- Lightweight titanium architecture for tension impact and control
- 115 grams of 18K White or Red gold
- 9 TW VVS+ diamonds on lever and crown

#### Functions:

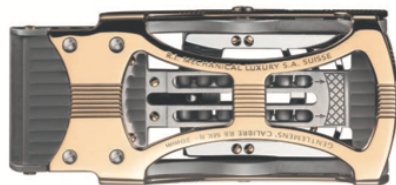
- 105 components / 46 individual with an expansion range of 30mm.
- Five Axle Construction
- Friction control guiding wheels
- Mechanically leveraged belt insertion clip for easy changeability of leather strap
- Haute Horlogerie fine finishing

## R8 MARK II THE DRIVER – MILLE MIGLIA EDITION

ISSUE DATE: 2014



1000  
MIGLIA →  
ROLAND ITEN  
MAIN SPONSOR  
MILLE MIGLIA 2014



The Mille Miglia commemorative R8 MKII buckle, part of "The Driver" collection, pays homage to the 2014 Mille Miglia route, sponsored by Roland Iten, who participated with five vintage sports cars.

Inspired by these iconic supercars, the R8 Mark II "The Driver" collection offers a technical yet elegant expansion lever reminiscent of the grill of the infamous Porsche 550 Spyder, one of the five cars in the 2014 race that traversed Brescia, Padua, Rome, and Bologna. Perfect for maneuvering in and out of low-seated vehicles or tidying your attire effortlessly, this buckle series combines traditional craftsmanship of Swiss micro-mechanics with the detail of high-end watchmaking, featuring the patented double ardillon tang for a secure grip on the leather strap. Each buckle offers two positions for a precise 35mm adjustment, akin to a Savile Row tailor's measurement for added comfort.

Operable with one hand, the buckle ensures instant, ergonomic, and discreet adjustments.

The R8 Mark II "The Driver" collection is entirely crafted and hand-finished in Switzerland.



## R8 MARK II THE DRIVER – MILLE MIGLIA EDITION

ISSUE DATE: 2014



TOTAL WEIGHT:	DRIVER 1: 120G / APPROX 100 G - 5N RED GOLD CLIP AND LEVER DRIVER 2: 100 G
MATERIALS:	NATURAL STEEL AND TITANIUM ARCHITECTURE, SOLID GOLD ACCENTS
OTHER:	3 TW VVS1 G+ 1.8MM DIAMONDS OFFERED WITH AUTHENTIC CROCODILE LEATHER BELT STRAP (29.5 CM THICKNESS) AND PACKED IN A LEATHER AND WOOD PRESENTATION BOX. NAPPA LEATHER TRAVEL POUCH INCLUDED.





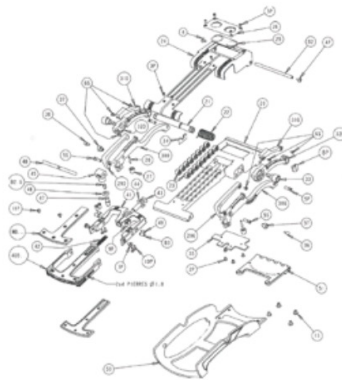
## R8 MARK II SPORT COUPE

ISSUE DATE: 2010

The R8 MKII SPORT COUPE is an evolution of the active sports model of the R8 collection series. It is not only suitable for active performance sports and leisure activities, it will pair nicely with your most elegant business or nighttime attire. The unique feature of the R8 MK II SPORT COUPE series is the double ardillon tang incorporated into a sporty three-prong expansion lever which grips the leather strap more securely, safeguards its longevity and affords a smoother expansion and contraction.



### COLLECTORS INFORMATION

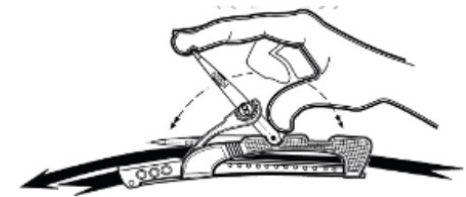


#### CASE :

- 130 grams total weight w/ 85 grams of red gold accents (COUPE 1)
- 120 grams total weight w/ 65 grams of red gold accents (COUPE 2)
- Grade T45 high strength-to-weight ratio steel
- Lightweight titanium architecture for tension impact and control
- 3 TW VVS+ natural diamonds on lever and crowns
- Five axle construction with 110 components / 46 individual
- Double ardillon tang

#### FUNCTIONS :

- Expansion and contraction range of 30mm
- Friction control guiding wheels
- Mechanically leveraged belt insertion clip for easy changeability of the leather strap
- 100% manufactured in Switzerland with Haute Horlogery fine finishing
- Issued with authentic alligator leather strap in leather and wood presentation box with leather travel pouch



## R8 MARK II SPORT COUPE

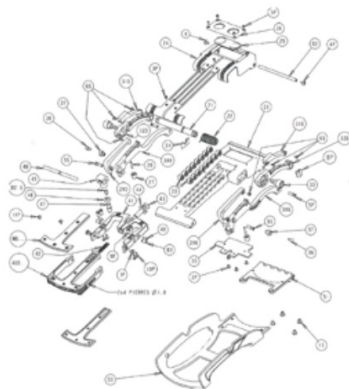
ISSUE DATE: 2010



The R8 MKII SPORT COUPE is an evolution of the active sports model of the R8 collection series. It is not only suitable for active performance sports and leisure activities, it will pair nicely with your most elegant business or nighttime attire. The unique feature of the R8 MK II SPORT COUPE series is the double ardillon tang incorporated into a sporty three-prong expansion lever which grips the leather strap more securely, safeguards its longevity and affords a smoother expansion and contraction.



### COLLECTORS INFORMATION



#### CASE :

- 112 grams total weight w/ 15 grams of red gold accents (COUPE 3)
- 108 grams total weight (COUPE 4)
- Grade T45 high strength-to-weight ratio steel
- Lightweight titanium architecture for tension impact and control
- 3 TW VVS+ natural diamonds on lever and crowns
- Five axle construction with 110 components / 46 individual
- Double ardillon tang

#### FUNCTIONS :

- Expansion and contraction range of 30mm
- Friction control guiding wheels
- Mechanically leveraged belt insertion clip for easy changeability of the leather strap
- 100% manufactured in Switzerland with Haute Horlogery fine finishing
- Issued with authentic alligator leather strap in leather and wood presentation box with leather travel pouch





ROLAND ITEN

