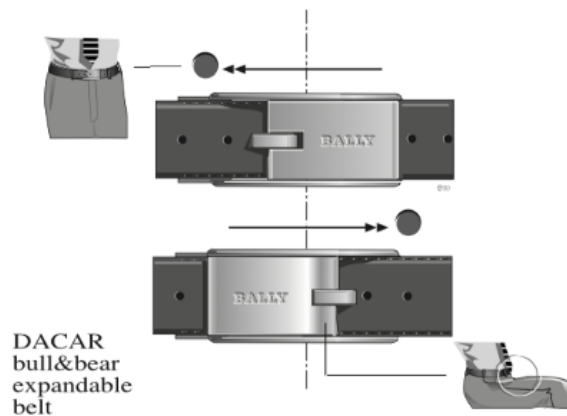
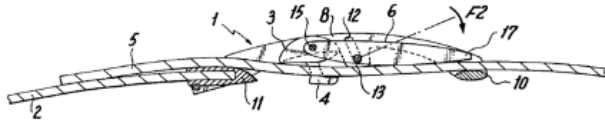


## THE ROLAND ITEN R8 MECHANICAL BELT BUCKLE SERIES



## THE ROLAND ITEN R8 MECHANICAL BELT BUCKLE SERIES

2004- 2018



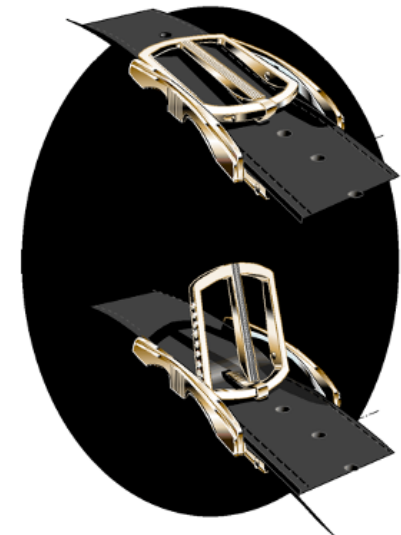
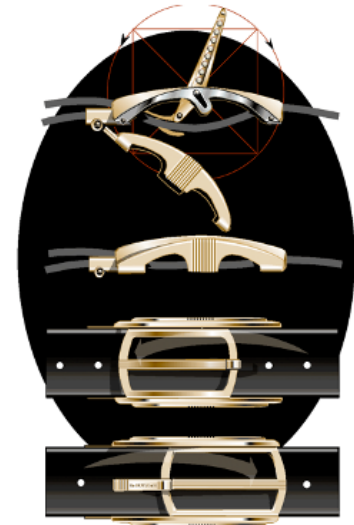
Roland Iten first invented the idea of a mechanical belt buckle well before his first collection launched at Baselworld 2004.

In the late 90's he created and patented a simple lever expansion buckle which he licenced to Bally. This early version, in cast steel, won awards and sold thousands of pieces inflight on Swissair and in airport duty-free shops around the world.

But it wasn't until Roland started designing watches for Bally in the early 2000's that he discovered watch-making machinery. Its precision ignited his quest to show the world what else could be done using haute horlogery know-how.

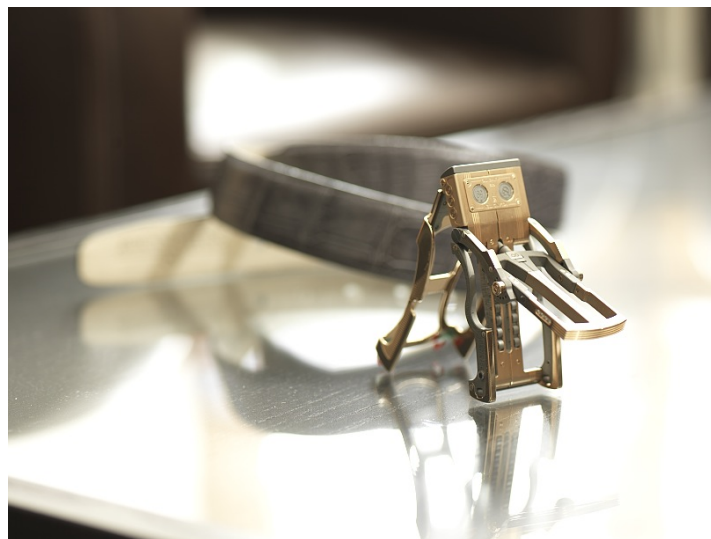
Identifying this gap in the men's jewellery market, Roland launched his own brand in 2003. At first his vision was to create the same five-component lever expansion concept, but instead of casting it in steel, made from solid gold as the world's first CNC engineered and manufactured mechanical belt buckle.

But as he discovered the vast capability that CNC machining provides for precision manufacture, his original 5 component model transformed into a solid gold with titanium architecture precision instrument, with 105 moveable mechanical features that perform functions that solve problems most Gentlemen did not even know they had.



## THE WORLD'S FIRST MECHANICAL BELT BUCKLE

2004



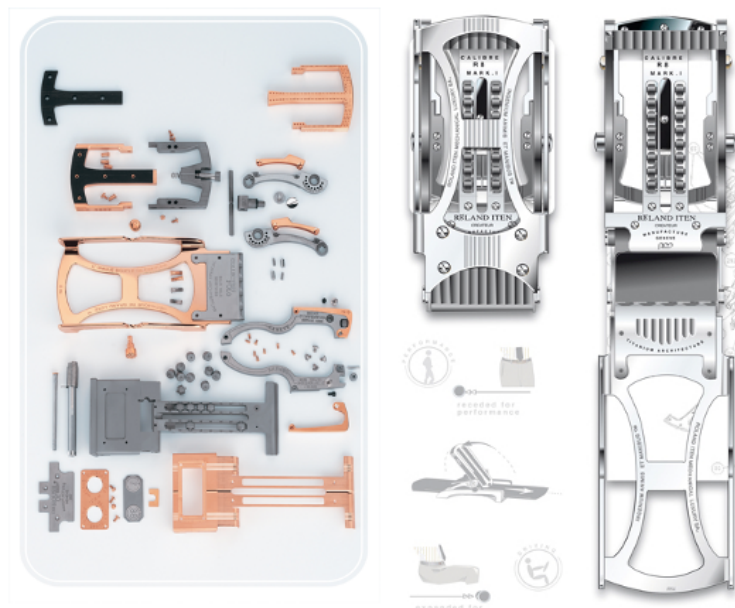
The Calibre R8 MK I was an extraordinary evolution of the very simple five-component expandable mechanism patent.

When it launched at Baselworld in 2004, the R8 MK I solid gold and titanium belt buckle, engineered in 105 custom-made, moveable, mechanical pieces, with a five-axle construction designed to provide its wearer with an extra 30mm of girth with the flip of a lever, revolutionised how collectors viewed the common belt buckle.

Even more so, the R8 Mark I opened the eyes of the entire watch industry as to what else could be achieved using the high precision machines that until then, had been used uniquely in the production of watch cases and components.

Hence forward, Roland Iten became known as the pioneer of mechanical luxury— a new segment in the high-end accessories market, to which he remains today its only serious contender.

Roland Iten is proud to count Jackie Chan, Roger Federer, Valery Gregiev, Ion Tiriac, Sylvester Stallone and other prominent businessmen, celebrities, oligarchs and sheikhs among the owners of this very special collection.





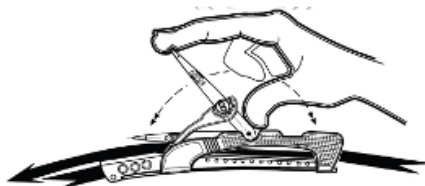
## R8 MARK I PRECIOUS SERIES

ISSUE DATE: 2004

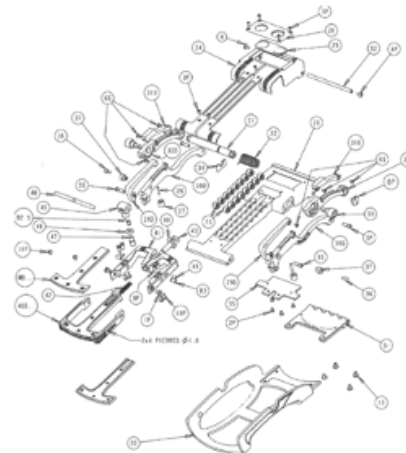


### Limited Series 88 pieces

- 6 in Solid White Gold full pave diamonds
- 5 in Solid Red Gold full pave diamonds
- 11 in Solid White Gold and Titanium
- 11 in Solid Red Gold and Titanium
- 11 in White Gold with Wood inlays
- 11 in Red Gold with Wood inlays
- 11 in White Gold with MOP inlays
- 11 in Red Gold with MOP inlays
- 6 in White Gold with MOP and diamond inlays
- 5 in Red Gold with MOP and diamond inlays



### COLLECTORS INFORMATION



### Case:

- Lightweight titanium architecture for tension impact and control
- 130-135 grams of 18K White gold
- 3 TW VVS+ diamonds on lever and crown

### Functions:

- 105 components / 46 individual with an expansion range of 30mm.
- Five Axle Construction
- Friction control guiding wheels
- Mechanically leveraged belt insertion clip for easy changeability of leather strap
- Haute Horlogerie fine finishing



## R8 MARK I UNIQUE EDITION ROGER FEDERER

ISSUE DATE: 2007



Roger Federer is to date, the only Sportsman in history to have won the prestigious Laureus Award four times consecutively and therefore, it was an honour for Roland Iten when Johan Rupert, owner of The Richemont Group, chose to commemorate this unique event with an equally unique gift to Roger of a Roland Iten R8 Mark I Mechanically Performing belt buckle in solid white gold and engraved with his name and Laureus emblem.

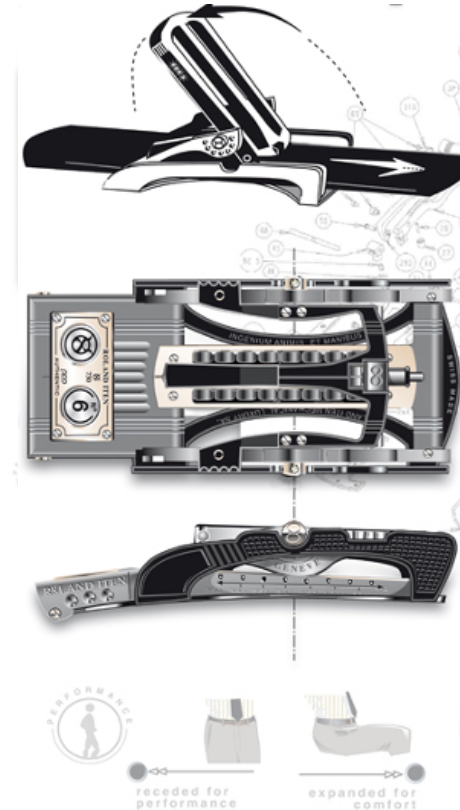
Housed in a specially made wooden case reminiscent of a tennis racket and in the colours of the Laureus , it is not certain that Roger has ever actually worn the piece as belt buckle. We believe he prefers to keep it among his most prized possessions in his trophy room making this piece one of the world's most valuable "Roland iten" collectibles.

## R8 MARK I SPORT COUPE SERIES

ISSUE DATE: 2006

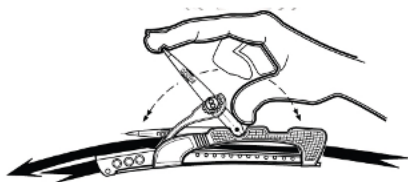


Destined to become the first collection for Roland Iten in 2004 the R8 Mark I Mechanical buckle is based on the original two-position lever expansion patent that Roland created for Bally in 1998. The R8 Sport model launched in 2006 boasts the same two-position expansion mechanism of 30mm, however, the solid gold clip and flipper is replaced with a scratch-proof, stainless steel over titanium construction that is lightweight and more performance oriented for active sports.

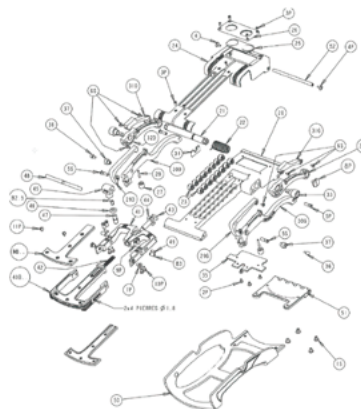


### Limited Series 40 pieces

- 20 in Natural steel with red gold accents
- 20 in blackened steel with red gold accents



### COLLECTORS INFORMATION



### Case:

- Lightweight titanium architecture for tension impact and control
- Total weight 103 grams / 14G Red Gold
- 3 TW VVS+ diamonds on lever and crown

### Functions:

- 105 components / 46 individual with an expansion range of 30mm.
- Five Axle Construction
- Friction control guiding wheels
- Mechanically leveraged belt insertion clip for easy changeability of leather strap
- Haute Horlogerie fine finishing

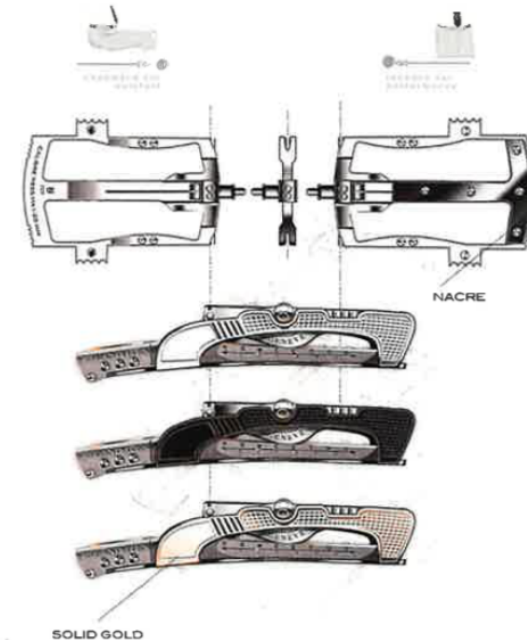
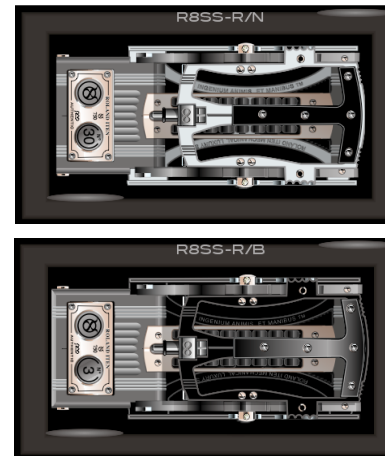


## R8 MARK I SPORT SEDAN SERIES

ISSUE DATE: 2007



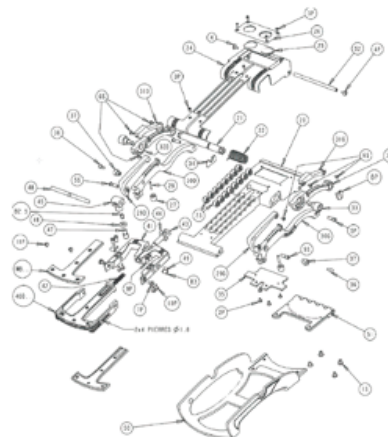
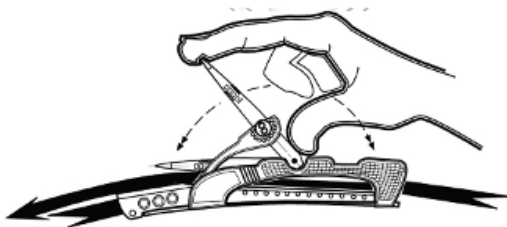
The R8 Mark I Sport Sedan issued with the same scratchproof stainless steel and titanium construction with red gold accents as the Mark I Coupe, combined the more elegant lines of the Precious collection with the lightness and durability of the Sport collection



### COLLECTORS INFORMATION

#### Limited Series 25 pieces

- 5 in Natural Steel and Titanium with Red Gold clip and Mother of Pearl inlays
- 10 in Natural Steel and Titanium with Mother of Pearl inlays
- 10 in Blackened Steel and Titanium with Mother of Pearl inlays



#### Case:

- Lightweight titanium architecture for tension impact and control
- Total weight 103-120/ - 14G / 31 G Red Gold
- 3 TW VVS+ diamonds on lever and crowns

#### Functions:

- 105 components / 46 individual with an expansion range of 30mm.
- Five Axle Construction
- Friction control guiding wheels
- Mechanically leveraged belt insertion clip for easy changeability of leather strap
- Haute Horlogerie fine finishing

## R8 MARK I SPORT BESPOKE COLLABORATIONS

ISSUE DATE: 2007/2008



ROLAND ITEN  
FOR  
PURDEY



London men's luxury goods firm **Alfred Dunhill Ltd** has launched the ultimate alligator belt for Gentlemen, featuring a high-tech gold, steel and diamond buckle. The Mechanical Belt, created by **Swiss Designer Roland Iten** is produced in a limited edition of 25 pieces globally and is designed for ultra-precise adjustments of exactly 35mm - the "two thumb" measurement a tailor will traditionally build into a custom made suit for added comfort. The five-axel buckle contains a patented system of over 108 movable, mechanical parts including roller bearings, plates and levers.

The mechanics make perfect one-handed adjustments a cinch, so to speak, for instance while maneuvering into and out of a low-seated vintage British sportscar. Hand finished by expert artisans in Geneva Switzerland, it is comprised of stainless steel and 18 carat rose gold components ornamented with two inset diamonds. A choice of two alligator skin straps are supplied as well. The belt will be available in Dunhills' flagship stores located in London, New York, Shanghai and Tokyo, with only a handful of pieces to be sold at each one.



## R8 MARK II THE GENTLEMAN SERIES

ISSUE DATE: 2009



The R8 Mark I patent is updated with a double ardillon and re-patented in 2008. The assumption is that R8 Mark II double (over-under) in-line ardillon grips the leather strap more securely because the weight is distributed between two holes on the leather strap, thus decreasing the deformation of the strap.

This assumption was confirmed during an 18 month „test drive“ by none other than action hero Sylvester Stallone who put the „Piece O“ through the ropes on the set of Expendables II. It is launched in 2009 as the “Gentleman” collection in a limited series of 30 pieces in Gold, and 40 pieces in Steel, then relaunched with an updated look in 2014 as “The Driver” Collection.

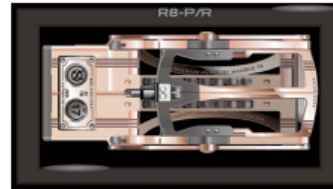
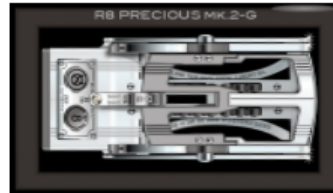


## R8 MARK II THE GENTLEMAN

ISSUE DATE: 2009



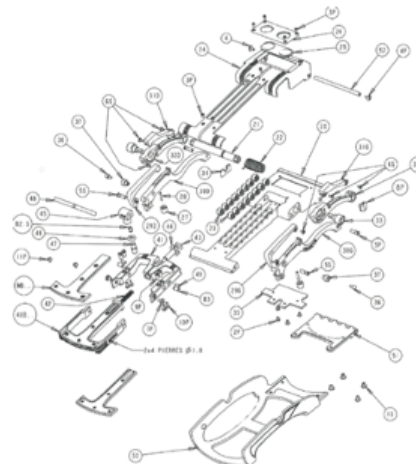
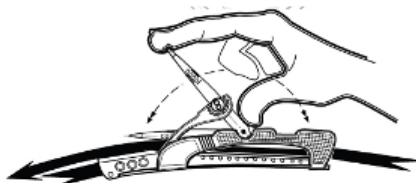
A limited edition R8 MKII buckle calibre inspired by Sylvester Stallone who test-drove the Piece 0 for 18 months. This edition features a double in-line ardillon system that grips the leather strap securely and minimizes its deformation.



### COLLECTORS INFORMATION

#### Limited Series 30 pieces:

- 1 BESPOKE piece Sylvester Stallone with hand signed certificate
- 15 Pieces in Red Gold with titanium
- 14 Pieces in White Gold with titanium



#### Case:

- Lightweight titanium architecture for tension impact and control
- 115 grams of 18K White or Red gold
- 9 TW VVS+ diamonds on lever and crown

#### Functions:

- 105 components / 46 individual with an expansion range of 30mm.
- Five Axle Construction
- Friction control guiding wheels
- Mechanically leveraged belt insertion clip for easy changeability of leather strap
- Haute Horlogerie fine finishing

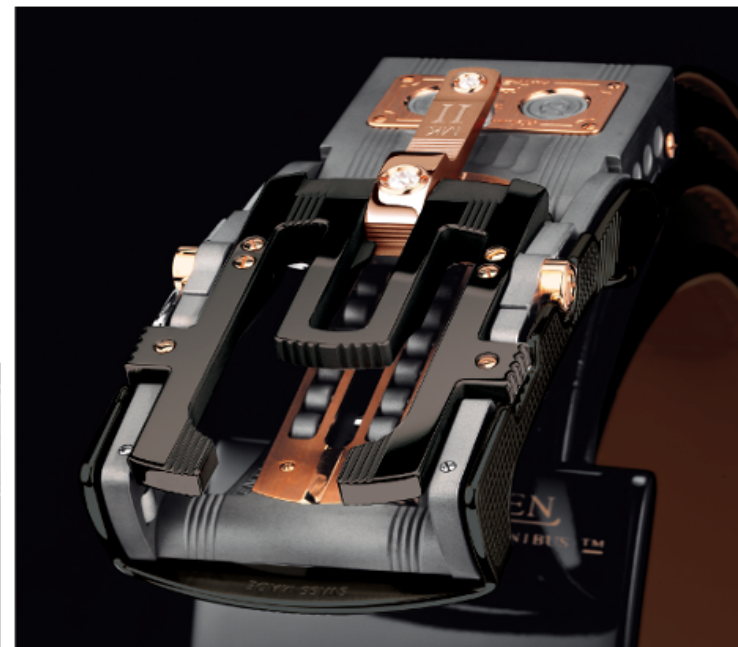


## R8 MARK II SPORT COUPE

ISSUE DATE: 2010



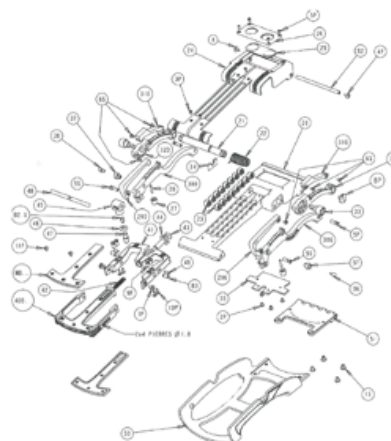
The R8 MKII SPORT COUPE is an evolution of the active sports model of the R8 collection series. It is not only suitable for active performance sports and leisure activities, it will pair nicely with your most elegant business or nighttime attire. The unique feature of the R8 MK II SPORT COUPE series is the double ardillon tang incorporated into a sporty three-prong expansion lever which grips the leather strap more securely, safeguards its longevity and affords a smoother expansion and contraction.



### COLLECTORS INFORMATION

#### Limited Series 40 pieces

- 20 in Natural steel with red gold accents
- 20 in blackened steel with red gold accents



#### Case:

- Lightweight titanium architecture for tension impact and control
- Total weight 103 grams / 14G Red Gold
- 3 TW VVS+ diamonds on lever and crown

#### Functions:

- 105 components / 46 individual with an expansion range of 30mm.
- Five Axle Construction
- Friction control guiding wheels
- Mechanically leveraged belt insertion clip for easy changeability of leather strap
- Haute Horlogerie fine finishing

## R8 MARK II THE OFFICER

ISSUE DATE: 2010



*"The Officer and the Gentleman"*

R8SS-Mk.II





## R8 MARK II THE OFFICER

ISSUE DATE: 2010



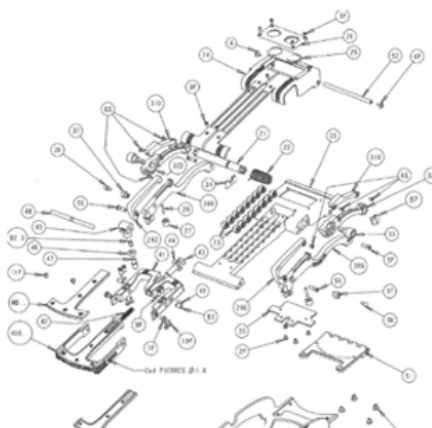
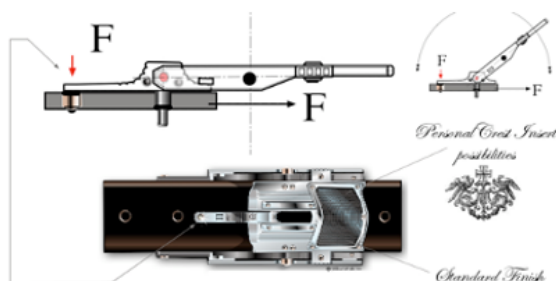
This R8 Mark II series is designed for the 'Officer' in every gentleman. The original "over-under" double ardillon (pin or tang) dates back to the 15th century. At that time, belts and leather straps were used by the military as versatile and practical weapons carriers, supporting the officer's pistol and sword. Double ardillons on the buckle distributed the weight more evenly over the belt than a single pin, thus ensuring that the belt lasted longer (perhaps a critical factor in a long battle such as Waterloo). Roland's reinvented double ardillon-- "in line" as opposed to over-under, is made for today's Officers and Gentlemen, who are more likely to forge their battles in the boardroom. The raison d'être for the double ardillon, however - increased longevity and added security - hasn't changed in over half a millennium.



### COLLECTORS INFORMATION

#### Limited Series

10 pieces in Natural and blackened steel with red gold accents



#### Case:

- Lightweight titanium architecture for tension impact and control
- 115 grams of 18K White red gold
- 9 TW VVS+ diamonds on lever and crown

#### Functions:

- 105 components / 46 individual with an expansion range of 30mm.
- Five Axle Construction
- Friction control guiding wheels
- Mechanically leveraged belt insertion clip for easy changeability of leather strap
- Haute Horlogerie fine finishing

## R8 MARK II THE DRIVER – MILLE MIGLIA EDITION

ISSUE DATE: 2014

1000  
MIGLIA



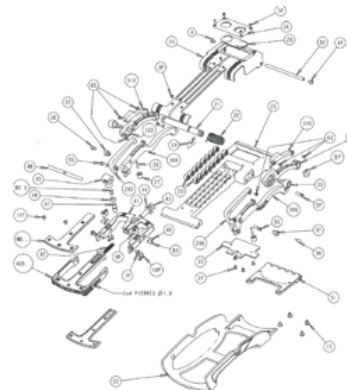
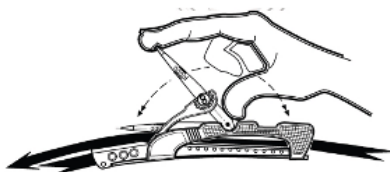
A limited edition R8 MKII buckle calibre called "The Driver" collection, commemorates Roland's sponsorship and participation in the Mille Miglia 2014. Four Bespoke pieces engraved with the name of the main cities of the 2014 race make this collection one of the most iconic series produced by Roland Iten.



### COLLECTORS INFORMATION

#### Limited Series 30 pieces:

- 4 Pieces in Natural Steel with Red Gold and bespoke engravings (Brescia, Padua, Roma & Bologna)
- 5 Pieces in Red Gold with titanium
- 5 Pieces in White Gold with titanium
- 8 Pieces in Natural Steel/Titanium w/ Red Gold
- 8 Pieces in Black Steel/Titanium w/ Red Gold



#### Case:

- Lightweight titanium architecture for tension impact and control
- 135 grams of 18K White gold
- 9 TW VVS+ diamonds on lever and crown

#### Functions:

- 105 components / 46 individual with an expansion range of 30mm.
- Five Axle Construction
- Friction control guiding wheels
- Mechanically leveraged belt insertion clip for easy changeability of leather strap
- Haute Horlogerie fine finishing

## R8 MARK II THE DRIVER – MILLE MIGLIA EDITION

ISSUE DATE: 2014



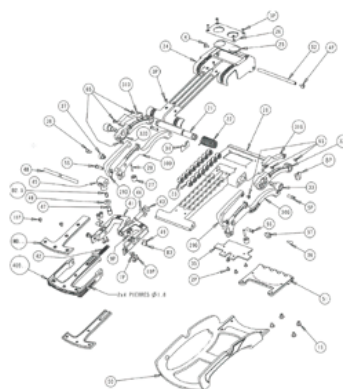
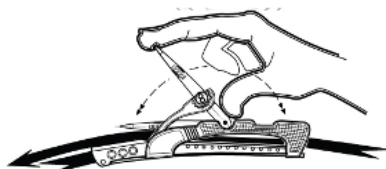
A limited edition R8 MKII buckle calibre called "The Driver" collection, commemorates Roland's sponsorship and participation in the Mille Miglia 2014. Four Bespoke pieces engraved with the name of one of the main cities of the 2014 race make this collection one of the most iconic series produced by Roland Iten.



### COLLECTORS INFORMATION

#### Limited Series 30 pieces:

- 4 Pieces in Natural Steel with Red Gold and bespoke engravings (Brescia, Padua, Roma & Bologna)
- 5 Pieces in Red Gold with titanium
- 5 Pieces in White Gold with titanium
- 8 Pieces in Natural Steel/Titanium w/ Red Gold
- 8 Pieces in Black Steel/Titanium w/ Red Gold



#### Case:

- Lightweight titanium architecture for tension impact and control
- 135 grams of 18K White gold
- 9 TW VVS+ diamonds on lever and crown

#### Functions:

- 105 components / 46 individual with an expansion range of 30mm.
- Five Axle Construction
- Friction control guiding wheels
- Mechanically leveraged belt insertion clip for easy changeability of leather strap
- Haute Horlogerie fine finishing



## R8 MARK II THE DRIVER – MILLE MIGLIA EDITION

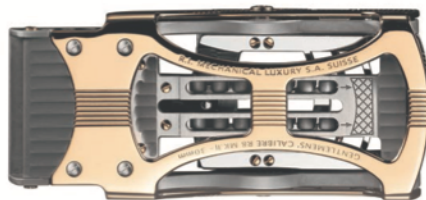
ISSUE DATE: 2014



1000  
MIGLIA → ROLAND ITEN  
MAIN SPONSOR  
MILLE MIGLIA 2014



ROLAND ITEN  
HAUTE MECHANIC 8 FOR GENTLEMEN™



## R8 MARK II ANNIVERSARY EDITION

ISSUE DATE: 2018

The R8 Mark II collection has historically been the most popular mechanical belt buckle collection in the Roland Iten stable because the proportions and lines of this buckle echo those found in sports cars. And should you need to maneuver to and from a low-seated sports car, or effortlessly tuck in your shirt to straighten it, this model offers a highly technical yet elegant solution.

Originally launched in 2008 with solid gold and titanium and/or a combination of gold, titanium and steel, the updated Anniversary Collection features a new model with Nacre (Tahiti mother of pearl) and/or Ebène wood, combined with finely engraved titanium in-lays alongside the traditional materials. This elegant collection is issued in its original 30mm width.

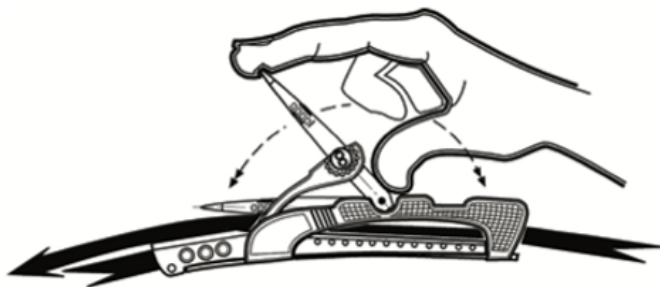
In addition, a new larger model with a width of 35mm is being introduced, crafted from the same solid gold, steel and titanium architecture, for a sportier look with jeans and other leisure wear

MANUFACTURE



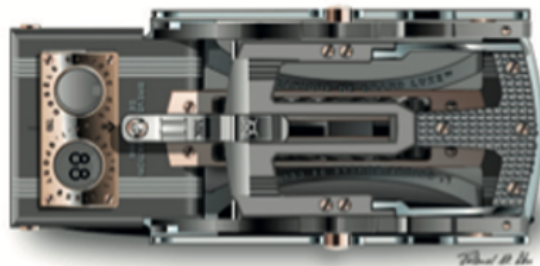
## R8 MARK II ANNIVERSARY EDITION

ISSUE DATE: 2018



### R8A MK.II MECHANICAL BELT CALIBRE

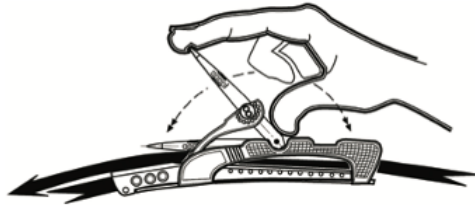
- CODENAME - THE ANNIVERSARY EDITION
- SKILL - ONE HANDED OPERATION
- FINE FINISHING - HAUTE HORLOGERIE
- GENEVA - ORIGIN OF MANUFACTURE
- ISSUE DATE - 2008
- EVOLUTION - R8 MKI (2004)
- PATENT - IN LINE DOUBLE ARDILLON TANG
- CREATEUR - ROLAND AK ITEN
- 120 - APPROXIMATE TOTAL WEIGHT IN GRAMS
- 105 - TOTAL COMPONENTS
- 91 - APPROXIMATE GOLD CONTENT IN GRAMS
- 28 - EXPANSION RANGE IN MM
- 5 - AXEL CONSTRUCTION
- 3 - TW VVS1+ ROUND DIAMONDS /0.1 CARATS
- 2 - MATERIALS: 18K WHITE GOLD, 5N RED GOLD
- STEEL
- WITH TITANIUM ARCHITECTURE
- 20 - LIMITED EDITION SERIES
- 4 - UNIQUE MILLE MIGLIA CALIBRES
- 10 - FOR ROYAL GUN SUPPLIER PURDEY
- 1 - ROGER FEDERER- LAUREUS SPORT AWARD





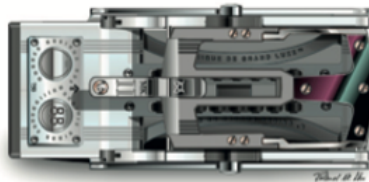
## R8 MARK II ANNIVERSARY EDITION

ISSUE DATE: 2018

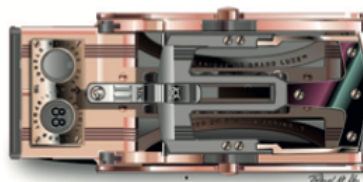


### R8A MK.II MECHANICAL BELT CALIBRE

CODENAME - THE ANNIVERSARY EDITION  
SKILL - ONE HANDED OPERATION  
FINE FINISHING - HAUTE HORLOGERIE  
GENEVA - ORIGIN OF MANUFACTURE  
ISSUE DATE - 2008  
EVOLUTION - R8 MKI (2004)  
PATENT - IN LINE DOUBLE ARDILLON TANG  
CREATEUR - ROLAND AK ITEN  
120 - APPROXIMATE TOTAL WEIGHT IN GRAMS  
105 - TOTAL COMPONENTS  
91 - APPROXIMATE GOLD CONTENT IN GRAMS  
28 - EXPANSION RANGE IN MM  
5 - AXEL CONSTRUCTION  
3 - TW VVS1+ ROUND DIAMONDS /0.1 CARATS  
2 - MATERIALS: 18K WHITE GOLD, 5N RED GOLD  
STEEL  
WITH TITANIUM ARCHITECTURE  
20 - LIMITED EDITION SERIES  
4 - UNIQUE MILLE MIGLIA CALIBRES  
10 - FOR ROYAL GUN SUPPLIER PURDEY  
1- ROGER FEDERER- LAUREUS SPORT AWARD



R8AMKII W-T-MP-9D



R8AMKII R-T-MP-9D



ROLAND ITEN  
HAUTE MECHANIC 8 FOR GENTLEMEN™



## R8 MARK II ANNIVERSARY EDITION

ISSUE DATE: 2018

