



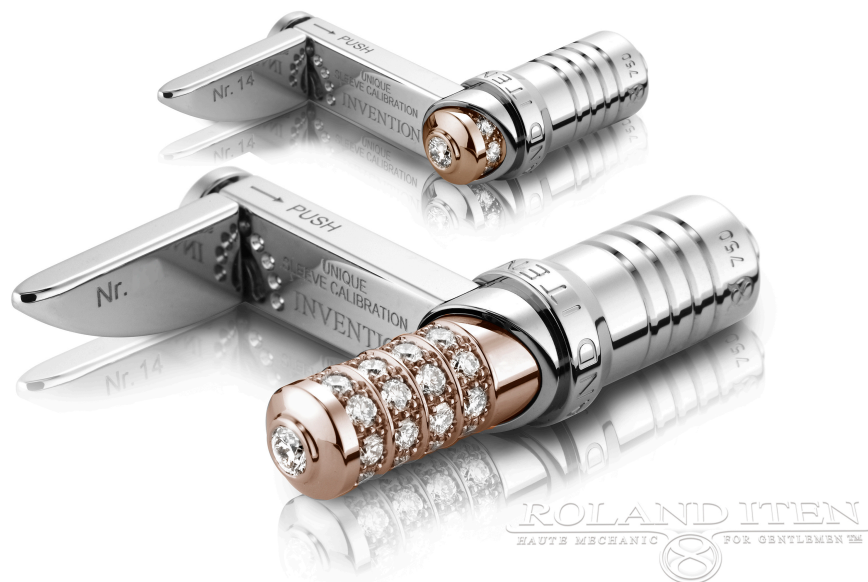
RZ 82 ZILETTO MECHANICAL CUFFLINKS

SOLID WHITE OR RED GOLD AND BLACK
STEEL



RZ8 MARK MARK I ZILETTO CUFFLINKS

ISSUE DATE: 2015



RZ8 "Ziletto" models which incorporate a sophisticated push-button ejection mechanism and a unique click-controlled, sliding sleeve calibration system. The former device conceals the diamond studded "bullets" for sober business activities, or with a simple press of the button, a hissing sound to rival the opening of a stiletto knife (thus the code name of these cufflinks "Ziletto") ejects the bullets at lightening speed to reveal their 30 TW VVS1 diamonds (60 per set) when a more festive look is desired.

The latter device is incorporated into the cufflink "wing" and allows a six-position fine adjustment to ensure the cuff fits comfortably, either above or beneath watches of varying dimensions. In the completely expanded position, the cuff is loose enough to enable more comfortable dining or driving, or simply a more convenient position of the sleeve for washing your hands.



Solid 18K White and/or 5N Red Gold. Ejection bullets encrusted with / 64 TWVS1+ diamonds per set

Series: 30 assorted sets

Issue Date: 2015

RZ8 MARK MARK I ZILETTO CUFFLINKS



RZ8 W-W-4D-30B



RZ8 R-R-64D



RZ8 W-W-64D



RZ8 R-W-64D



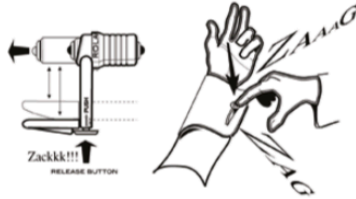
RZ8 W-R-64D



RZ8 BS-W-64D

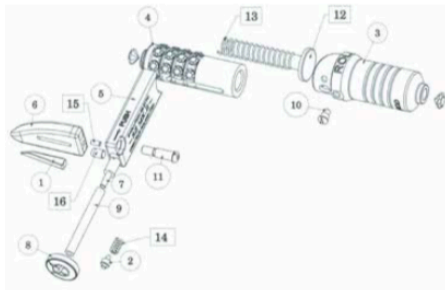


RZ8 MARK MARK I ZILETTO CUFFLINKS



RZ8 MK.II CALIBRATION CUFFLINKS

CODE NAME - ZILETTO
SKILL - ONE HANDED OPERATION
FINE FINISHING - HAUTE HORLOGERIE
GENEVA - ORIGIN OF MANUFACTURE
ISSUE DATE - JUNE 2010
EVOLUTION - ZORRO MK-1 (2004)
PATENT - WORLD'S FIRST CALIBRATION
WING DEVICE FOR A CUFFLINK
CREATEUR - ROLAND AK ITEN
42 - APPROXIMATE TOTAL WEIGHT
IN GRAMS (SET OF 2)
32 - TOTAL COMPONENTS
40 - APPROXIMATE GOLD CONTENT IN GRAMS
5 - CALIBRATION RANGE IN MM
6 - POSITION FINE ADJUSTMENT OF SHIRT CUFF
64 - TW VVS1+ ROUND DIAMONDS / 2.8 CARATS
2 - MATERIALS 18K WHITE AND 5N RED GOLD
30 - LIMITED EDITION SERIES



MANUFACTURE



RZ8 MARK MARK I ZILETTO CUFFLINKS



EVOLUTION Mk.II

Histoire de la Pièce

COLLECTORS INFORMATION : RZ8 ZILETTO MARK II
THE RZ8 ZILETTO MARK II IS THE EVOLUTION OF THE ORIGINAL Z SHAPED, SPRING EJECTION, DOUBLE-BULLET CUFFLINKS CREATED BY ROLAND ITEN IN 2004. THE STREAMLINED WING MECHANISM REPLACES ONE BULLET AND AFFORDS AN EASIER MANIPULATION OF THE CUFFLINKS. IT IS BETTER SUITED FOR CUFF HOLES OF VARYING SIZES AND THE UNIQUE, PATENT-PENDING WING CALIBRATION MECHANISM ALLOWS A FINE ADJUSTMENT TO ENSURE YOUR CUFF FITS COMFORTABLY WITH WATCHES OF ALL SIZES. A SIMPLE PRESS OF THE BUTTON ON THE WING, AND THE BULLET EJECTS TO REVEAL ITS 30 TW DIAMONDS (60 PER SET). THE FIRST 30 SETS OF THIS LIMITED AND NUMBERED SERIES BECAME AVAILABLE IN 2011.

